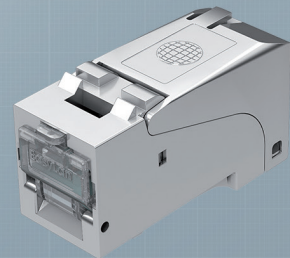
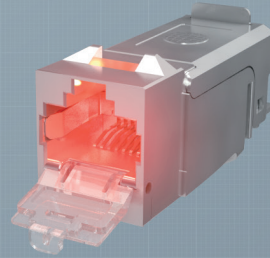


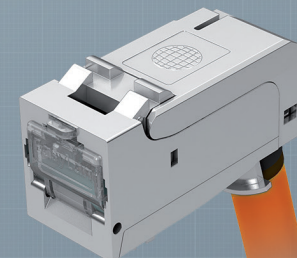
**SOFORT LIEFERBAR**



preLink<sup>®</sup> RJ45 Keystone Kat. 6<sub>A</sub> ISO/IEC  
CKPAS011 (Solid-Variante)  
CKPAS021 (Flex-Variante)



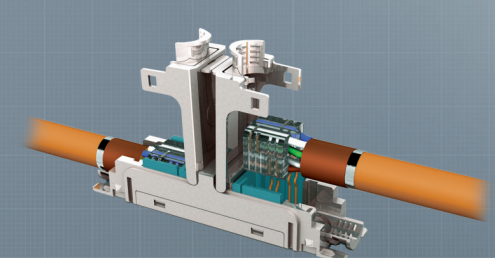
preLink<sup>®</sup> RJ45 Keystone L.E.O. Kat. 6A EIA/TIA  
CKLES010 (Solid-Variante)  
CKLES020 (Flex-Variante)



preLink<sup>®</sup> RJ45 Keystone gewinkelt Kat. 6<sub>A</sub> ISO/IEC  
CKWAS011 (Solid-Variante)  
CKWAS021 (Flex-Variante)



preLink<sup>®</sup> RJ45 Steckermodul Kat. 6<sub>A</sub> ISO/IEC  
CKSA0100



preLink<sup>®</sup> Extender Kat. 6<sub>A</sub> ISO/IEC  
CKEA0100 (Solid-Variante)

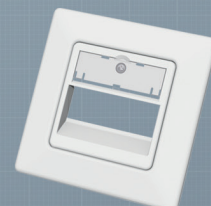
### Modulträger SL



1-fach  
CKVDUSL1R

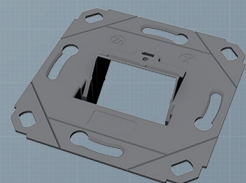


2-fach  
CKVDUSL2R

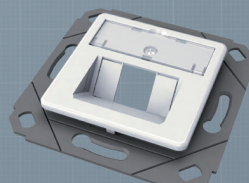


3-fach  
CKVDUSL3R

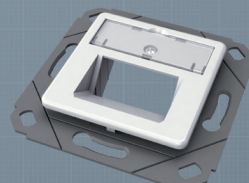
### Designfähige Modulträger



1-/2-fach ohne Zentralplatte  
CKVD1DS

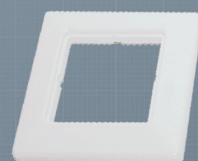


1-fach mit Zentralplatte  
CKVD1D2



2-fach mit Zentralplatte  
CKVD1D1

### Rahmen für Modulträger



1-fach  
ADZ00102

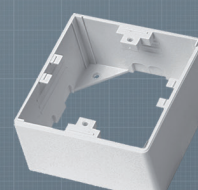


2-fach  
ADZ00103

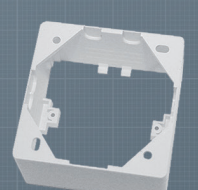
### Aufputz Modulträger



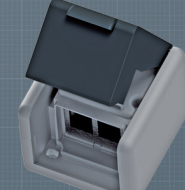
2-fach gerade  
CKVDU292



Aufputzbecher  
CKVDAP90

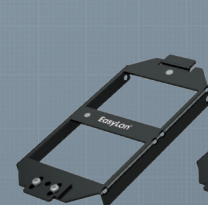


Tiefenerweiterung 10 mm  
CKVDDR90



Modulaufnahme IP44  
CKVDAP92

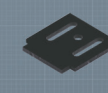
### Bodentankträger



OBO Trägerplatte GB2  
ABG00011



OBO Trägerplatte GB3  
ABG00012



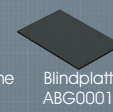
Adapter  
für Electraplan  
ABG00017



Einbauplatte 3x Keystone  
ABG00016



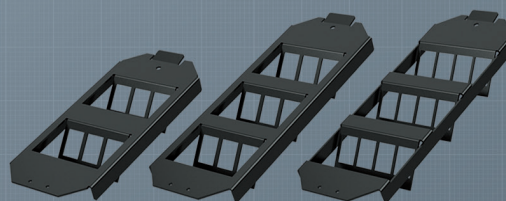
Einbauplatte 4x Keystone  
ABG00014



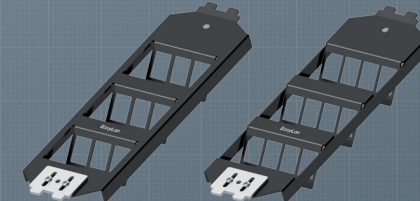
Blindplatte  
ABG00013



Zugentlastung  
ABG00018

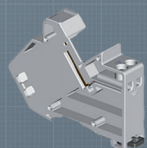


Bodentankträger Basic GB2 2x3 | GB3 3x3 | GB3 3x4  
ABGEC023 | ABGEC033 | ABGEC034



PUK Bodentankträger 3x3  
AGBPUK33 | PUK Bodentankträger 3x4  
AGBPUK34

### Hutschienenmodule



Verteilerschranke  
CKVHMOD



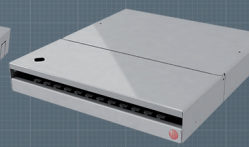
Schalterschranke  
CKVHECOMOD



Seitenabdeckung  
CKVHECOSTL

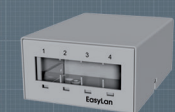


10" modular für 12x Keystone  
CPPF01KS1E



19" modular für 24x Keystone  
CPPF09KS1E

### Consolidation Point Gehäuse



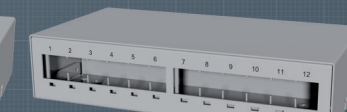
4-fach  
CKVPL0041E



6-fach  
CKVPL0061E

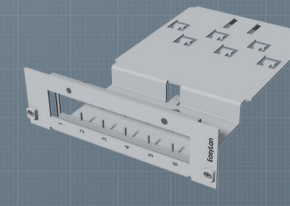


8-fach  
CKVPL0081E

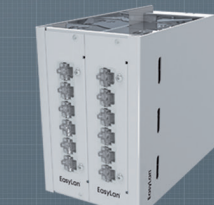


12-fach  
CKVPL0121E

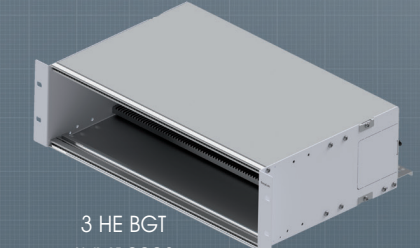
### Baugruppenträger (BGT)



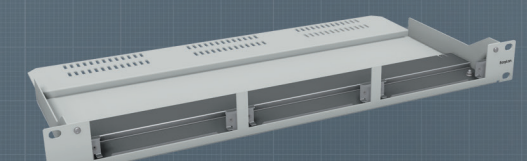
Einschubmodul für BGT  
CVE000001E



Side BGT  
AVMS10001E

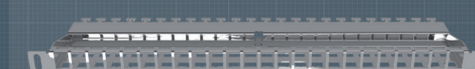


3 HE BGT  
AVM10003



1 HE BGT  
AVM113001E

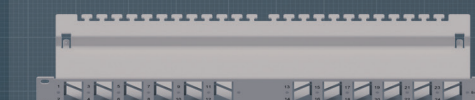
### Panel



1 HE gerade  
48x RJ45 preLink<sup>®</sup> RZ  
CKRASP611E



1 HE gerade  
CKVPL0101E



1 HE Winkelabgang  
CKVPL0W01E

### Trunkkabel



Abmantelwerkzeug  
CZABIBL1



Kupferband  
CZCUBT20



Staubschutzkappen